

ASSEMBLY INSTRUCTIONS

e*LAN CORNER WORKSTATIONS

NOTE: Please count and inspect all pieces before disposing of any carton or packing materials.

COMPONENTS

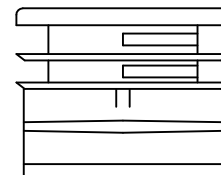
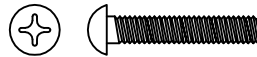
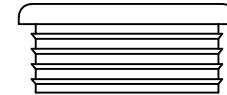
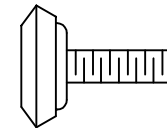
When ordering components, specific color and/or size information may be required.
Contact a Mayline Customer Service Representative. 1-800-822-8037

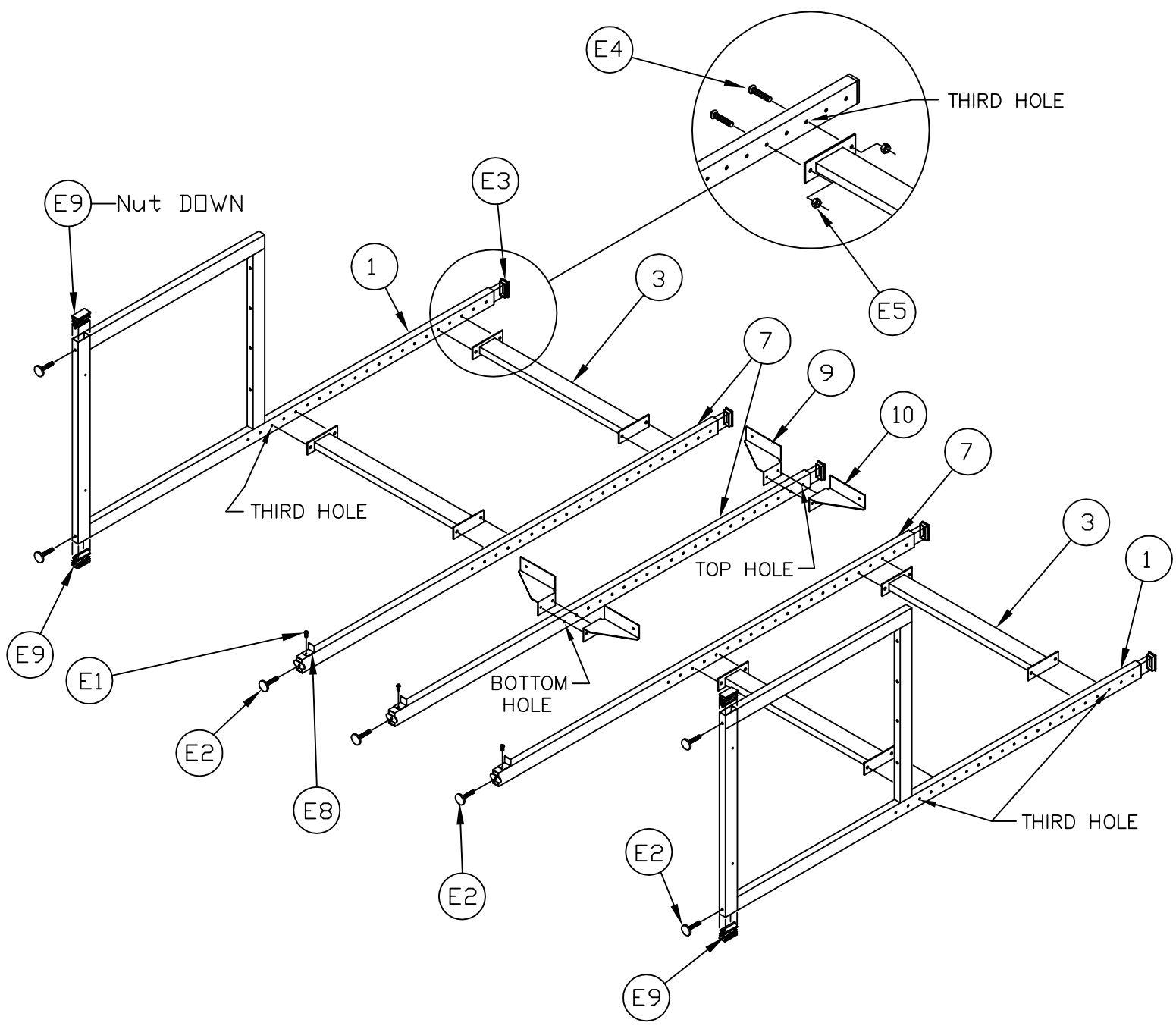
<u>REF. #</u>	<u>QTY.</u>	<u>DESCRIPTION</u>	<u>PART No.</u>
1	2	FRAME ASSEMBLY	B6839**
2	1	FLOOR SHELF	L4466**
3	4	SPREADER ASSEMBLY	A6799**
4	1	CORNER TOP	L4467**
5	2	SHELF, UPPER	L4465**
6	1	SHELF SUPPORT	B6311**
7	3	UPRIGHT ASSEMBLY	A6725**
8	10	FLOOR SHELF SUPPORT	A6801**
9	3	L.H. BRACKET	B6279**
10	3	R.H. BRACKET	B6278**

*** Denotes Color Code*

HARDWARE BAG (PART No. A6848) **for individual item, order that part number*

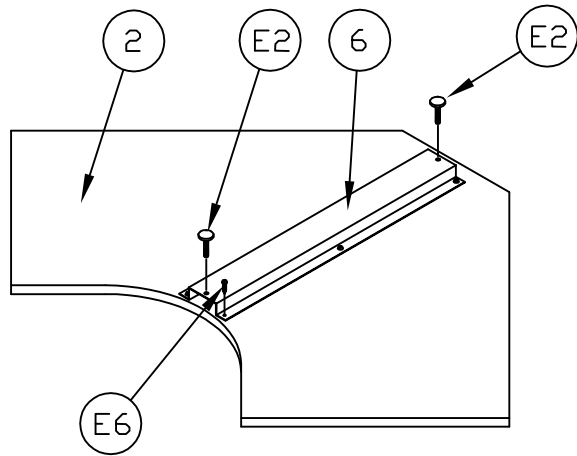
<u>REF. #</u>	<u>QTY.</u>	<u>DESCRIPTION</u>	<u>PART No.</u>
E1	3	#8-32 X 3/8 SCREW	X247*
E2	9	GLIDE	Q444*
E3	5	END CAP	F474*
E4	42	1/4-20 X1 1/2 SCREW	X196*
E5	42	1/4-20 HEX NUT	T29*
E6	42	#10 X 5/8 SCREW	X5108*
E7	8	#10 X 2 1/2 SCREW	X335*
E8	3	SUPPORT CLIP	B6296*
E9	4	THREADED END CAP	F663*



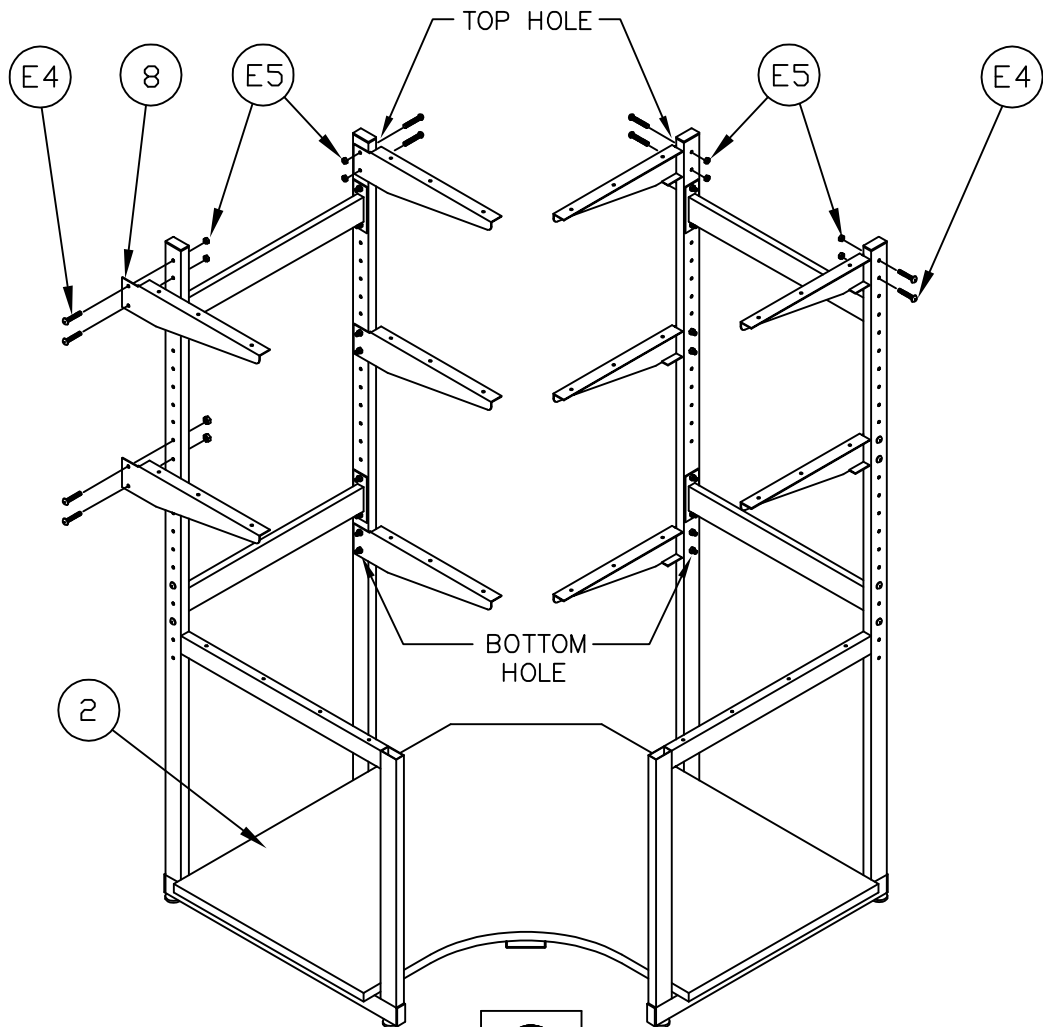


1

(2)

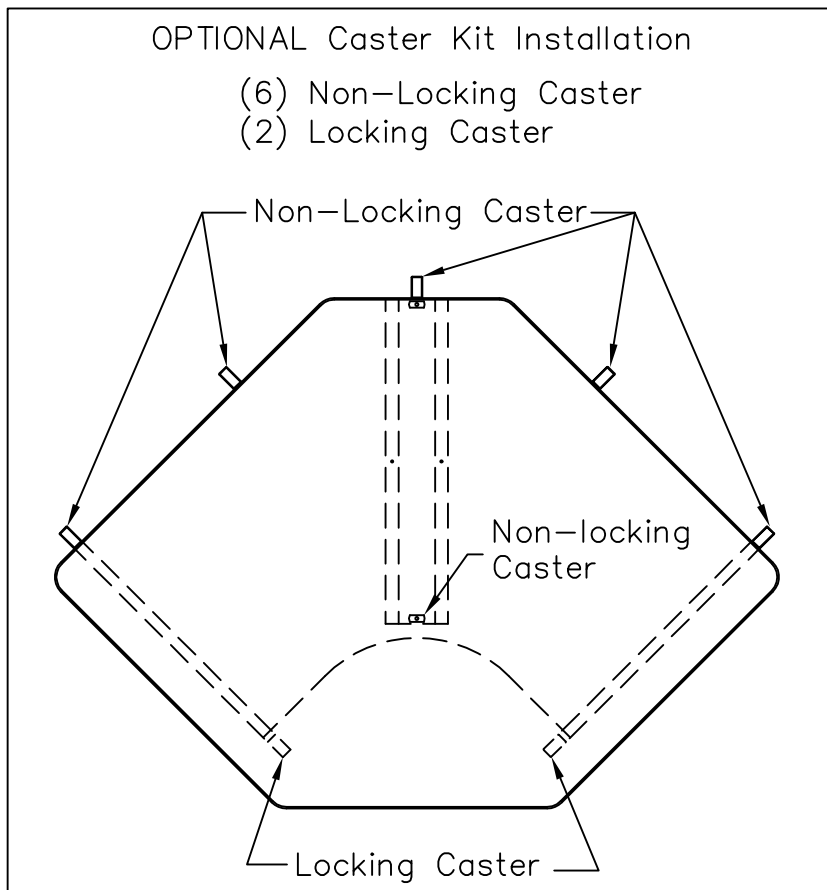
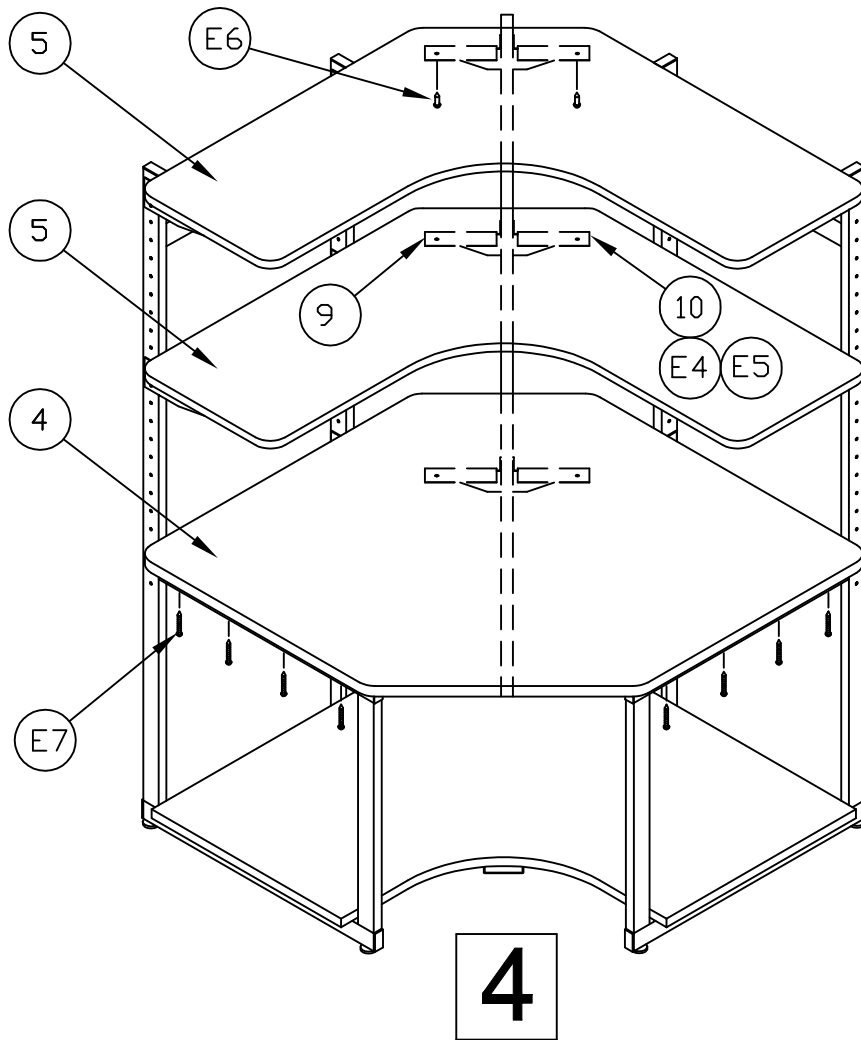


2



3

(3)



(4)