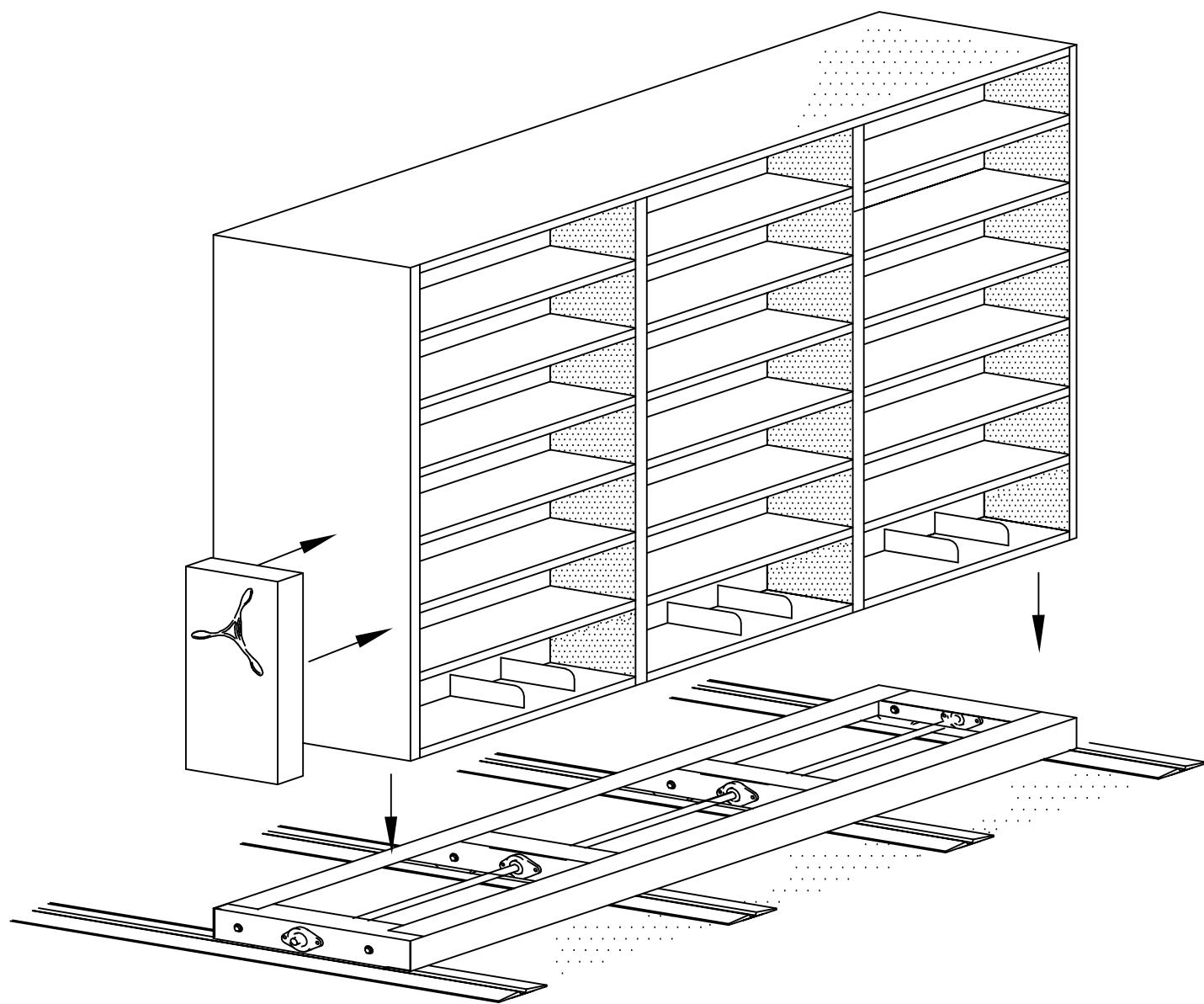


# Assembly Procedures for Mobile Lite



# MOBILE LITE SYSTEM INSTALLATION

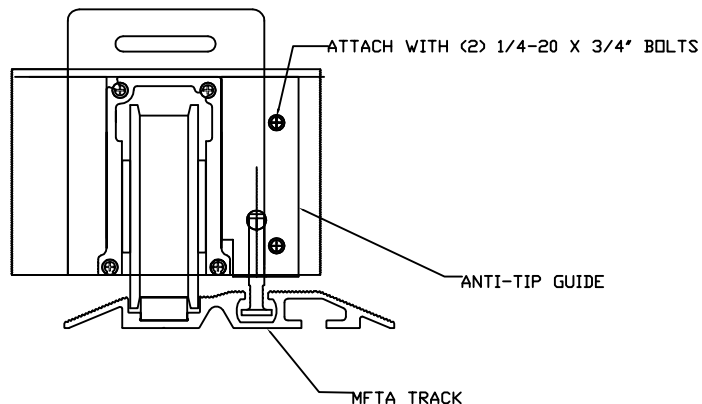
*Kwik-File recommends the removal of all carpet and padding prior to installing Mobile Lite. We suggest that carpet be removed the length and width of each track. Product performs best when installed on concrete or tile. **NOTE: Kwik-File cannot assure proper leveling if track is installed on low-pile carpet.***

- \* Read all instructions before attempting assembly.
- \* Check floor plan layout. Measure and mark floor for intended layout, preplan exact location of all units with regards to columns, lights, windows and obstructions.

## GENERAL NOTES:

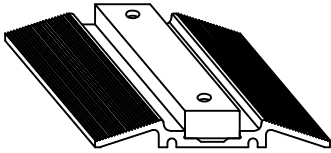
1. Installation of the in track anti-tip track begins with the layout of the floor plan. It is imperative for the proper operation of this system that the tracks be parallel and square. On a two track system, the in track anti-tip is the rear track. On a three or more track system, the anti tip track is the second (from the front) track.
2. The carriage with the anti tip guide is designed to be inserted into the track after the track is in the approximate location, but prior to completely securing it to the floor. This will eliminate the need to dis-assemble the guide from the carriage.
3. The carriage is shipped completely assembled, however if the anti tip guide assembly cannot be inserted into the track it is possible to remove and reinstall the mount assembly. Care must be taken to properly place the mount tightly to the channel and angle of the carriage.

### Detail of Anti Tip Guide

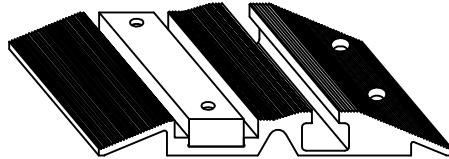


4. Required tools:
  - hammer drill (cement drill bit provided)
  - drill with phillips screw adapter
  - flat and phillips screwdriver
  - 7/16" socket
  - 1-1/16" thin wall socket
  - 3/4" socket
  - level
  - chalk line
  - measuring tape

Flat Track (MFT)

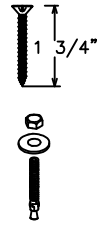


In-Track Anti-Tip Flat Track (MFTA)



TRACK HARDWARE KIT  
(PER RUN OF TRACK)

| PART NUMBER | DESCRIPTION                          |
|-------------|--------------------------------------|
| TRA301      | 3/16 X 1-3/4" TORX HEAD CEMENT SCREW |
| TRA200      | HILTI II, SEISMIC, 1/4X3-1/4         |

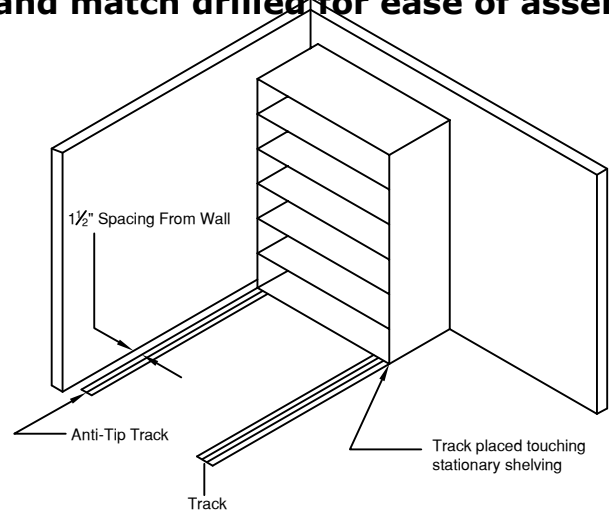
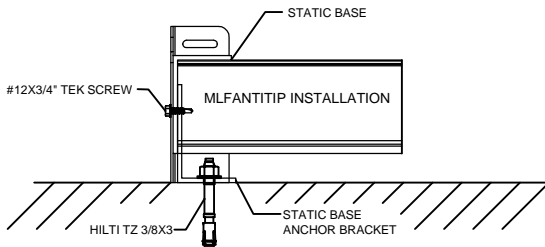


**TRACK INSTALLATION:**

1. Install Stationary Shelving at one end. Use stationary shelving to assist in aligning track and mobile carriages. If the stationary shelving is installed on a fixed base you must install the MLFANTITIP to the fixed base. See drawing below for installation.
2. Align assembled track parallel to wall or aisle with approximately 1- 1/2" clearance from any obstacle.

**Caution:** Steel track insert and Aluminum track splices must stagger.

**Note:** Track has been pre-assembled and match drilled for ease of assembly.

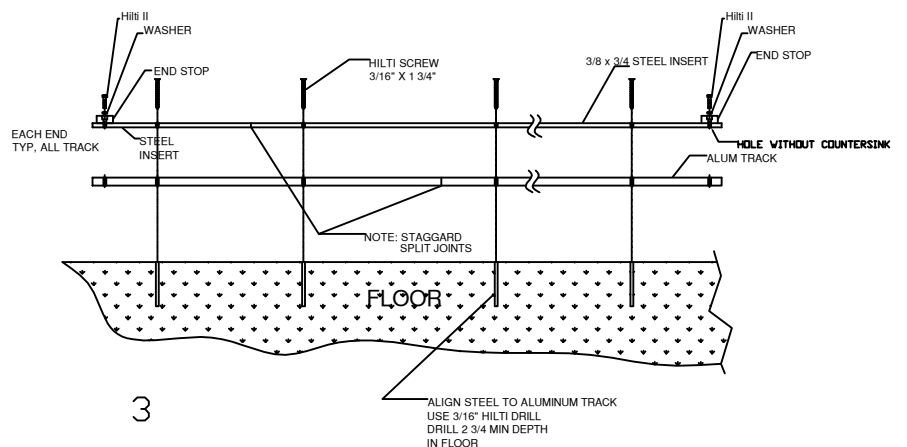


**Sample Layout:**

**Note:** This layout is a 2-Track system. See General Notes #1 for proper anti tip track location.

3. The steel insert and aluminum track has been pre-drilled. Be sure the holes in the steel insert and the holes in the aluminum track line up. Using the track as a guide, drill through the steel and aluminum into the floor using the provided 3/16" dia. Hilti drill bit. Carefully clean out the hole. With torx bit provided, drive in the Hilti 3/16" x 1-3/4" cement screws.

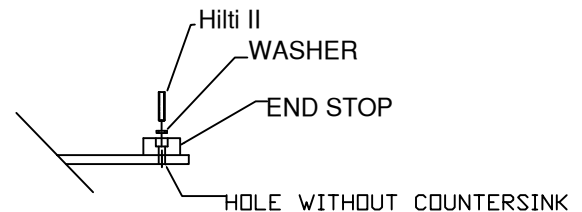
**Note:** Heads of screws must be below running surface of track. File heads of screws if necessary to ensure smooth surface.



4. Once the first tack is secured, the remaining tracks can be set in the approximate location. Place one carriage on the track to determine spacing. Verify carriage wheels are centered on the steel insert.
5. The tracks must be parallel and square to each other to ensure proper operation. Measure each set of tracks and the entire system, corner to corner, to verify that each distance is the same. Once each cross measurement is the same, the system is square and parallel.
6. Secure remaining track to the floor using the method described in step 3.
7. Maintaining careful alignment of the Anti-Tip track, drill and install a Hilti Kwik Bolt II in every available anchor point in the Anti-Tip track. The strength of the anti-tip is in the anchors. Make sure they are tightened properly.

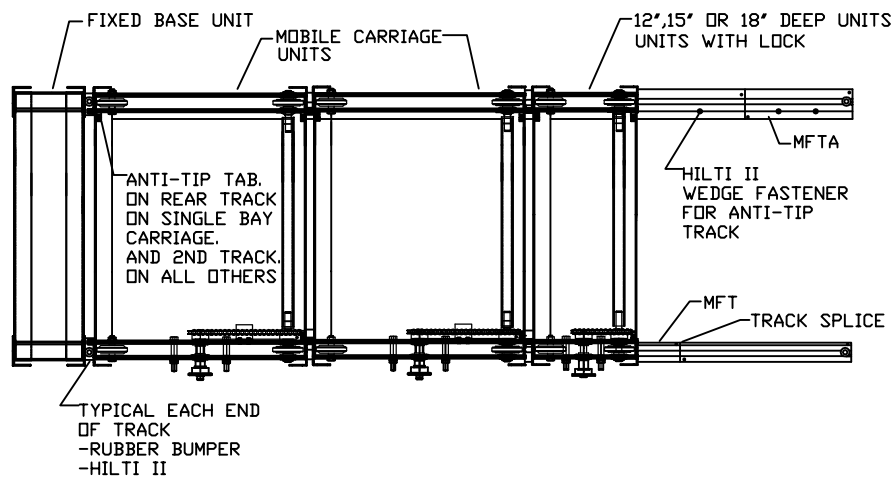
**Note: Hole depth for Hilti Kwik Bolt II must be consistent to prevent tipping hazard.**

8. Place the remaining carriages on the track and verify a smooth operation for all carriages.
9. Install end stops using the 3-1/4" long Hilti II and washer. One per end of track.  
Note: Track piece may need to be drilled out to accommodate Hilti II fastener.



**Sample Layout:**

Note: This layout is a 2-Track system. See General Notes #1 for proper anti tip track location.



**RDS Drive Box Installation:**

1. Remove the cover (fig. E) from the Responsive Drive Box (RDB).
2. Slide the RDB using top two mounting holes over the two 1/2"-13 bolts (fig. B) extending from the center of the carriage. These bolts are held in place by jam nuts (fig. A) which are left in position.
3. When the RDB is seated against the jam nuts (fig. A), install 1/2" washers (fig. C) and finger tight the two 1/2"-13 nylon nuts (fig. D) which are in the accessories bag.

4. Attach chain to middle sprocket assembly, to the bottom sprocket assembly (front drive channel) and around the chain idler. ONLY USE MASTER LINK (half link not required). Do not over tighten chain. Proper tension of chain is 1/2" - 5/8" deflection with a 5 pound pull at the chain tensioner location.
5. Assemble the end shelving unit. This can be done after the RDB assembly has begun.
6. At this time secure the drive box at the top as well as the bottom. Make sure the Responsive Drive Box is square and parallel to the shelving. Drill two 1/4" holes at the top of the drive box into the 4-post upright and secure with (2) 1/4"-20 screws and nuts. The head of the screw should be on the inside of the 4-post upright to prevent interference with filing media. When the upper screws are secure and the Responsive Drive is properly positioned, you may tighten the two 1/2" nuts at the bottom (fig. D).
7. Install the cover (fig. E) using the six sheet metal screws provided (fig. F). INSTALL THE 3/16"X3/16"X1/2" SQUARE KEY (fig. J) AND ATTACH E-CLIP TO HANDLE SHAFT.
8. Install detent locking plate (fig. O) using two 1/4"-20 countersunk screws.
9. Install the handle (fig. K). Install the 1-1/16" Jam Nut (fig. L). Tighten the jam nut (fig. L) with a 1-1/16" thin wall socket (not provided). **BE SURE BACK OF HANDLE IS SEATED AGAINST THE E-CLIP ON THE SHAFT.** Install the black dome plug (fig. M).
10. The responsive drive installation is complete and you may now install the remainder of the shelving. Install the shelving per the manufacturer's specs. Secure with Tek screws through corners / center plates. Tek screws found in accessory box.

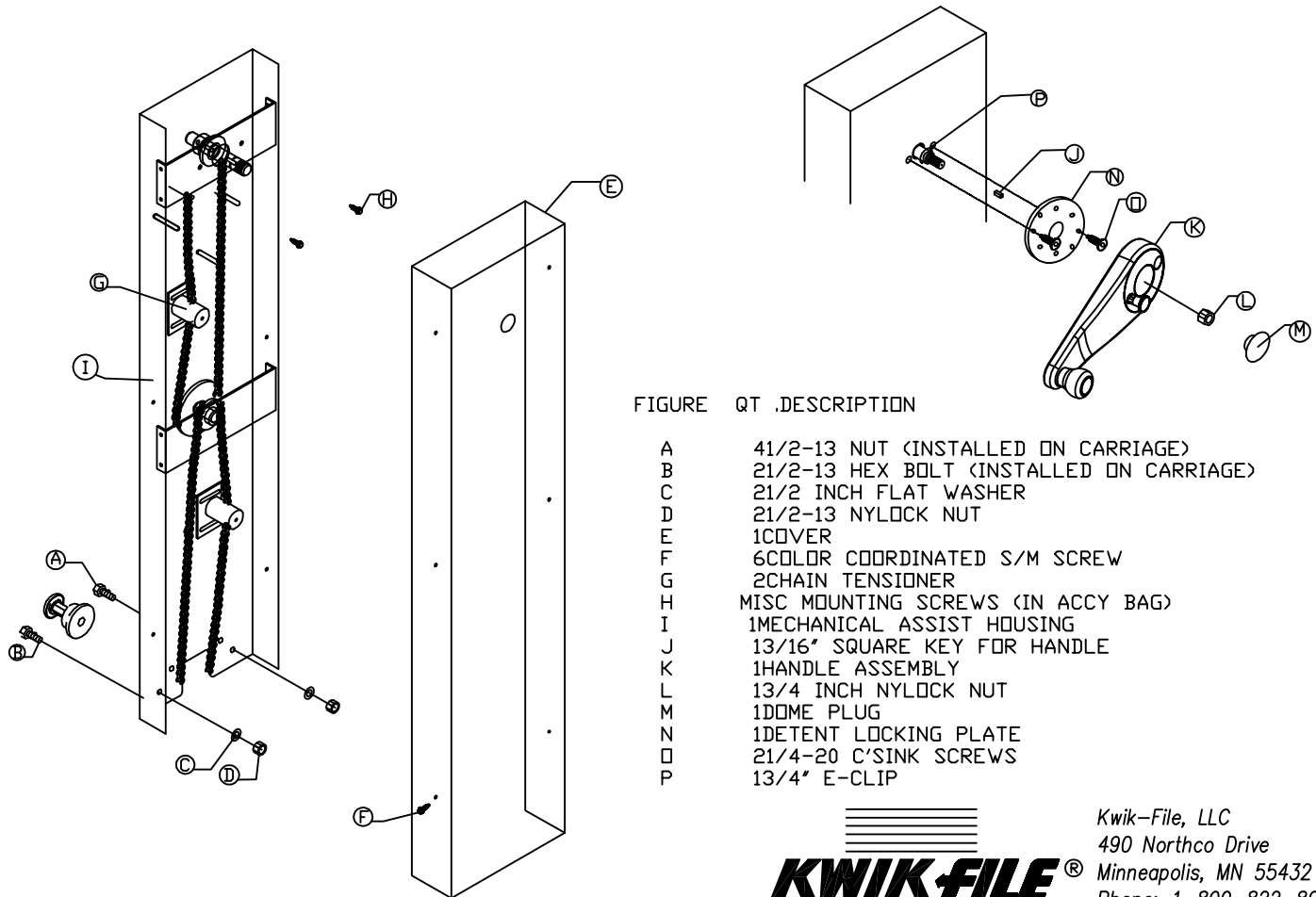


FIGURE QT .DESCRIPTION

|   |  |
|---|--|
| A | 41/2-13 NUT (INSTALLED ON CARRIAGE)      |
| B | 21/2-13 HEX BOLT (INSTALLED ON CARRIAGE) |
| C | 21/2 INCH FLAT WASHER                    |
| D | 21/2-13 NYLOCK NUT                       |
| E | 1COVER                                   |
| F | 6COLOR COORDINATED S/M SCREW             |
| G | 2CHAIN TENSIONER                         |
| H | MISC MOUNTING SCREWS (IN ACCY BAG)       |
| I | 1MECHANICAL ASSIST HOUSING               |
| J | 13/16" SQUARE KEY FOR HANDLE             |
| K | 1HANDLE ASSEMBLY                         |
| L | 13/4 INCH NYLOCK NUT                     |
| M | 1DOME PLUG                               |
| N | 1DETENT LOCKING PLATE                    |
| O | 21/4-20 C'SINK SCREWS                    |
| P | 13/4" E-CLIP                             |



Kwik-File, LLC  
 490 Northco Drive  
 Minneapolis, MN 55432  
 Phone: 1-800-822-8037  
 Fax: 920-457-7388  
 Online: [www.mayline.com](http://www.mayline.com)