

ASSEMBLY INSTRUCTIONS

TALON TILT-TOP TABLES

*NOTE: Please count and inspect all pieces before disposing of any carton or packing materials.
All units consist of 2 cartons consisting of the following.*

TOP CARTON

When ordering components, specific color and/or size information may be required.
Contact a Mayline Customer Service Representative. 1-800-822-8037

REF#	QTY.	DESCRIPTION	PART NO.
1	1	Top	CALL ~~**

** Denotes Color Code
~~Denotes Size

BASE CARTON

REF#	QTY.	DESCRIPTION	PART NO.
2	1	Base Assembly	CALL ~~**
3	2	Caster, Locking	8200961 *
4	2	Caster, Non-Locking	8200964 *
5	1	Caster Wrench	

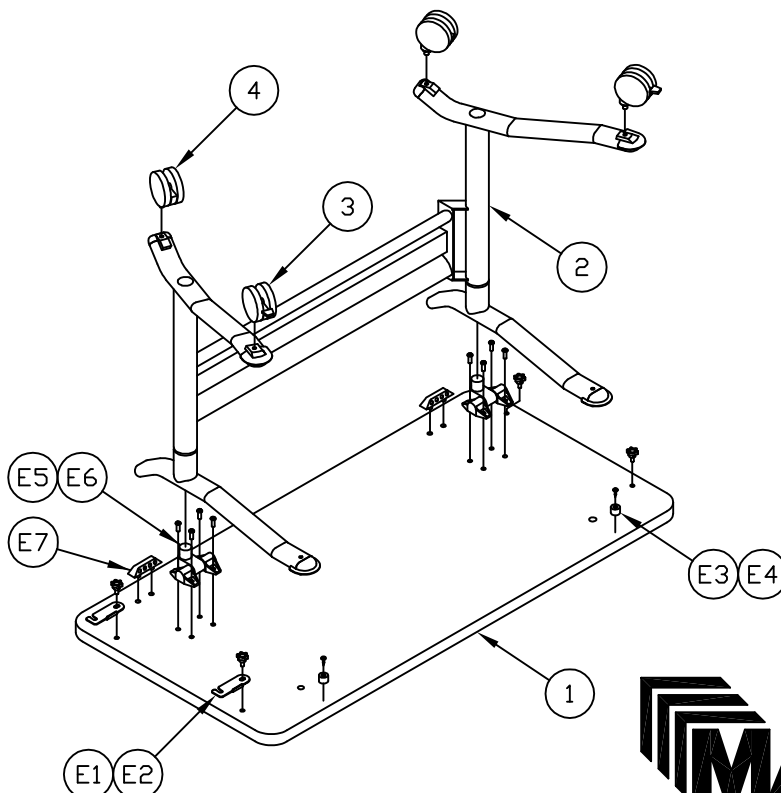
* Individual Items, Order by part number.

HARDWARE BAG (Part No. A7616 *)

REF#	QTY.	DESCRIPTION	PART NO.
E1	2	Ganging Bracket	B7523
E2	4	Knob, 1/4-20	K37
E3	2	Bumper	D10 *
E4	2	Screw, #10 x 5/8	5018217 *
E5	1	Allen Wrench	

HARDWARE BAG (Part No. 8200355 *)

REF#	QTY.	DESCRIPTION	PART NO.
E6	2	Top Mounting Brackets	8200515 *
E7	8	Screw, 1/4-20 x 3/4	700124 *
E8	2	Plastic Inserts	8200157 *



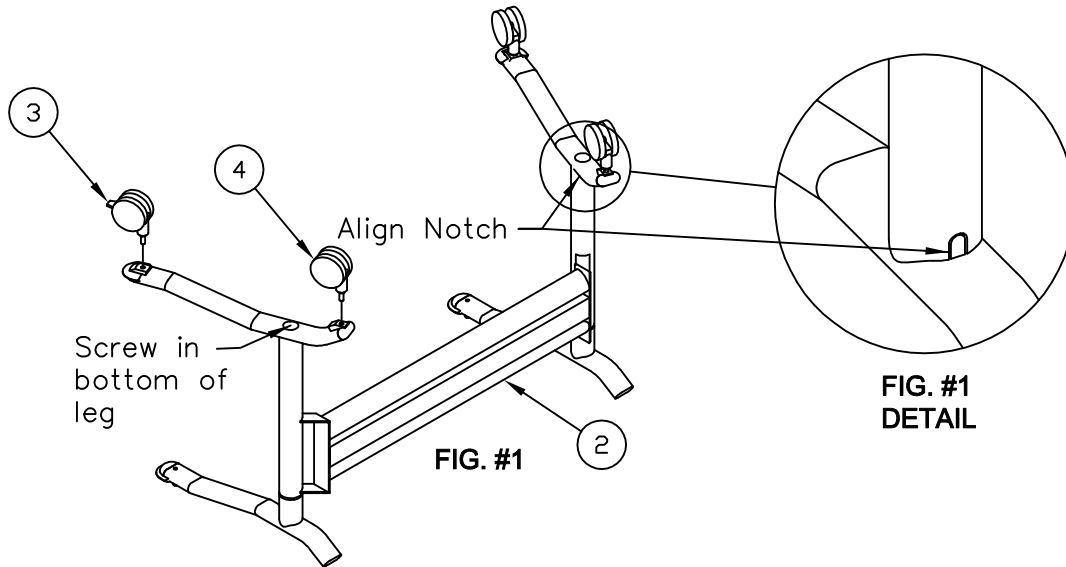
Tools Required for Assembly

Allen Wrench 5mm or 3/16",
Allen Wrench 4mm or 5/32",
Allen Wrench 8mm or 5/16" (supplied),
Caster Wrench (supplied),
Hammer,
Phillips Screwdriver.

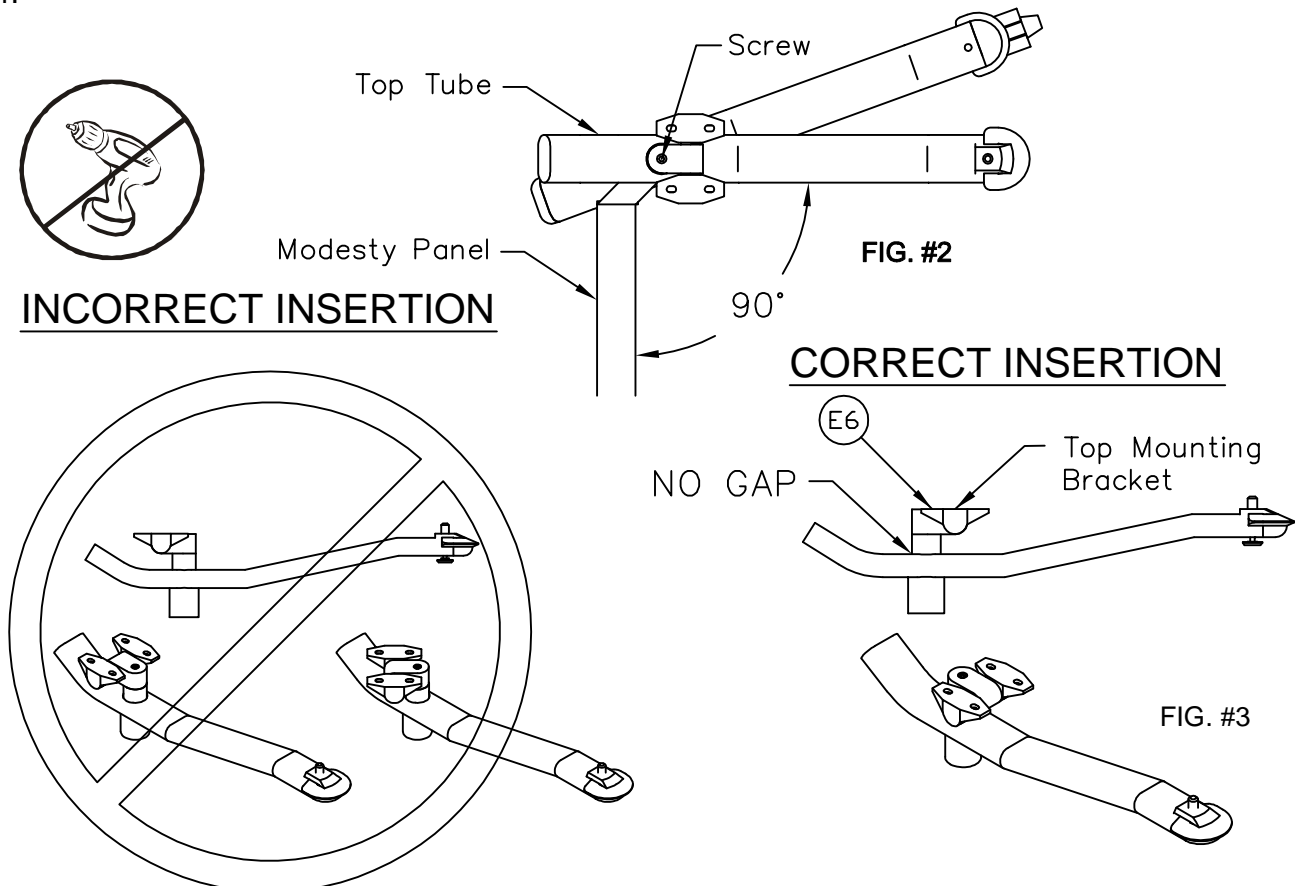
Note: A Magnetic or Power Driver may be used to assist in assembly.


MAYLINE® Mayline Company, LLC
 619 N. Commerce, P.O. Box 728
 Sheboygan, WI 53082-0728
 Toll Free: 1-800-822-8037
 FAX: 920-457-7388
 On Line: www.mayline.com

1. Begin assembly by placing the Base (2) as shown in Fig. #1. Rotate legs into place until notch aligns. See detail in Fig. #1
2. With the supplied 8mm or 5/16" Allen Wrench tighten the screw in the bottom of the Leg. See Fig #1.
3. Attach Casters, Locking (3) & Casters, Non-Locking (4) to Base (2) as shown with supplied wrench (E5).

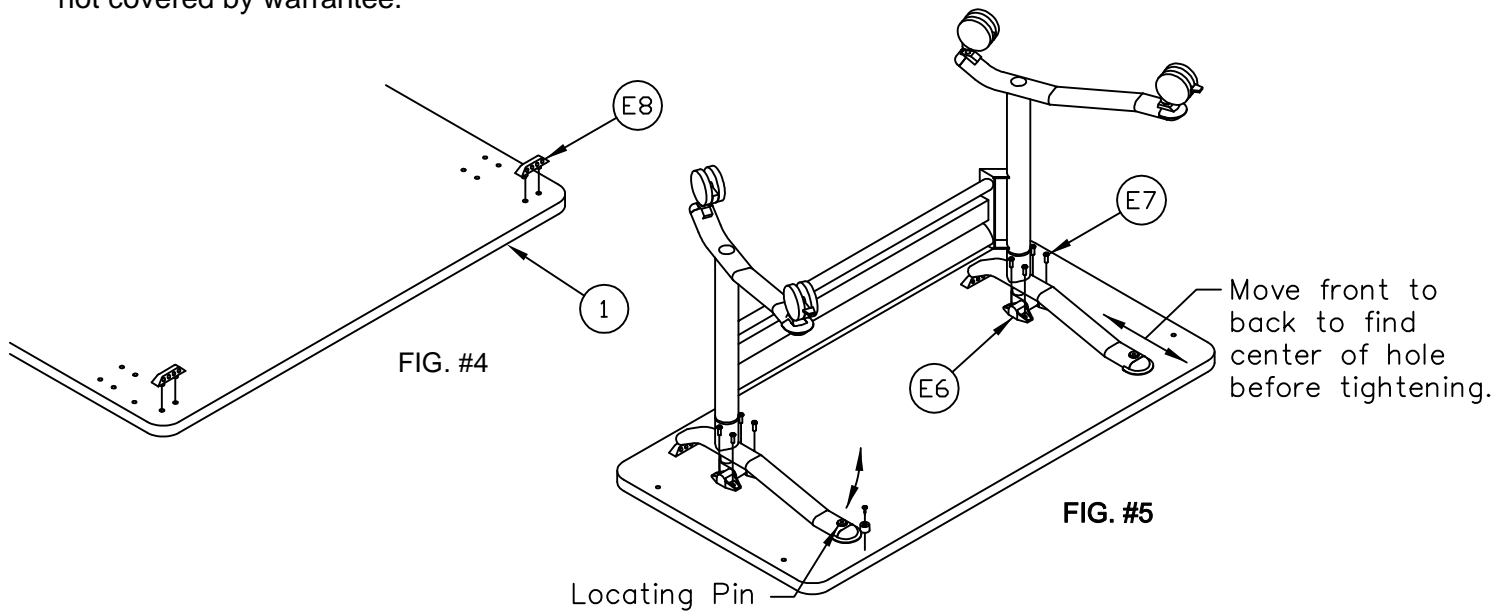


4. Flip Base onto casters. Rotate top tube at approximately 90° from the modesty panel as shown in Fig. #2. Begin assembly by locating the Top Mounting Brackets (E6) and inserting them into the round leg tube as shown in Fig. #3. Caution: Correct rotation and insertion is critical to proper operation of the unit.
5. With a 5mm or 3/16" Allen Wrench firmly tighten the screw in the top of the Top Mounting Bracket. The compression fitting can not be over tightened by hand, however caution must be used when using a power driver.

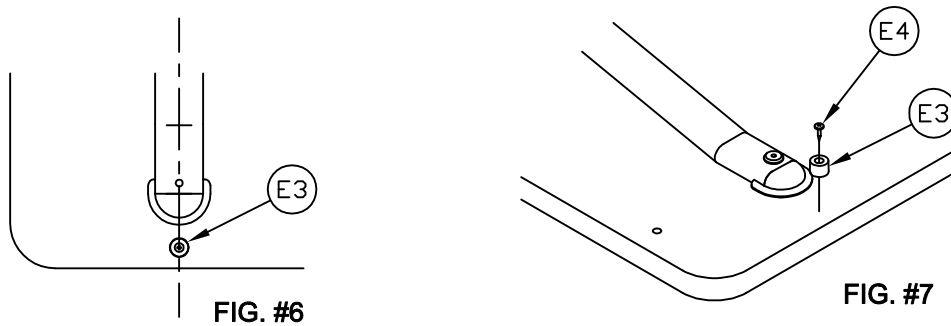


6. Place the Top (1) face down on a clean, flat surface. Attach Plastic Inserts (E8) by aligning the stubs with the pre-drilled holes in the top. Tap firmly with a hammer until inserts are tight against the Top. See Fig. #4

7. Position the Base Assembly as shown in Fig #5. With a 4mm or 5/32" Allen Wrench install eight Screws (E7) through the Mounting Bracket (E6) into the metal inserts in the Top. Do Not tighten at this time. Adjust the frame so the Locating Pin properly seats itself into the center of the locating hole in the Top. See Fig. #5. Return to the eight Screws (E7) and tighten at this time. Caution: Over tightening may cause damage not covered by warrantee.

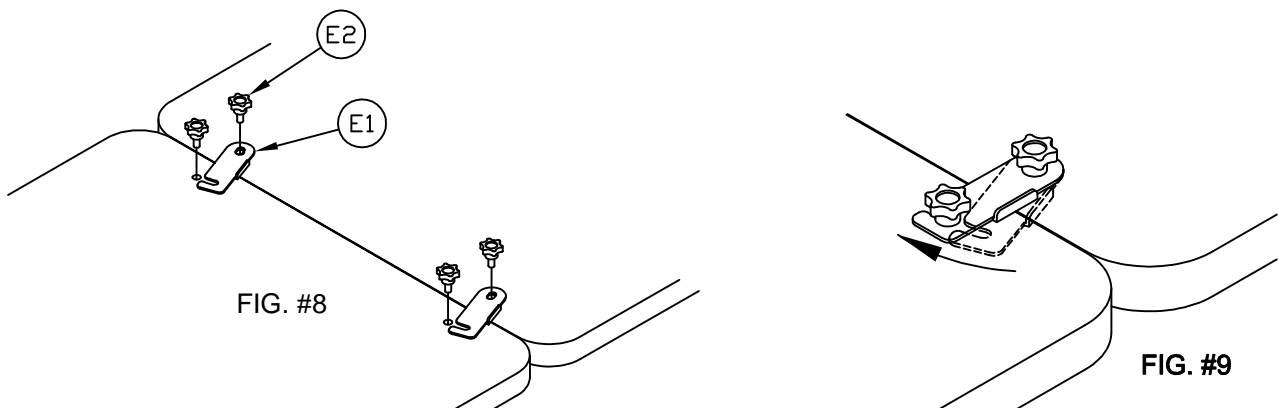


8. Attach Bumpers (E3) to Top by centering between Base and edge of Top in line with the arm of the Base using Screws (E4). See Fig. #6 & #7



9. Attach Ganging Brackets with tables in upright, leveled and approximate position. Insert Knobs (E2) through the Ganging Brackets (E1) into the metal inserts in the Top. Do not tighten Knobs at this time. See Fig. #8

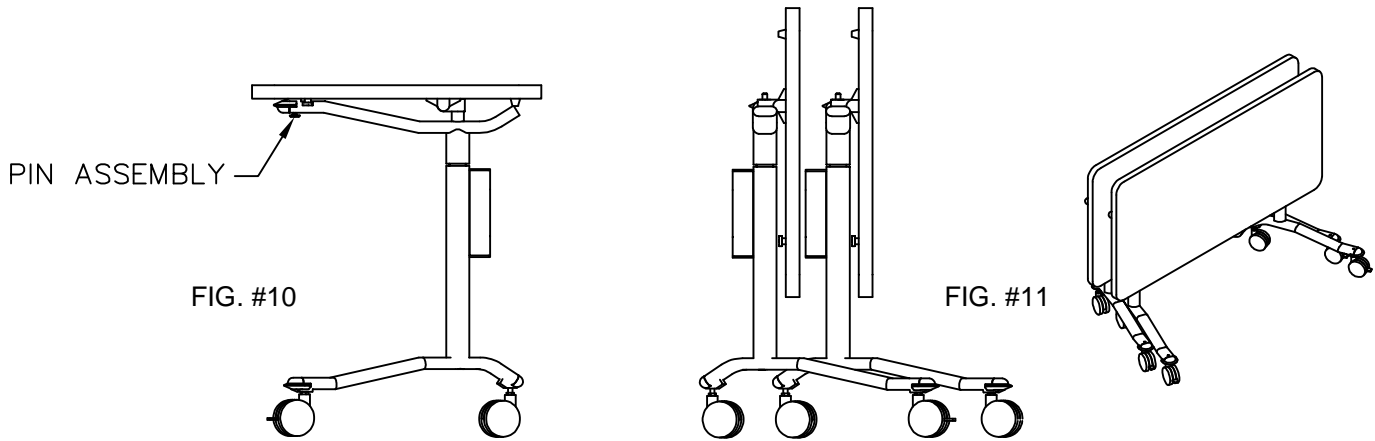
10. Rotate the Ganging Bracket (E1) under the Knob (E2). Tighten Knobs. See figure #9.



Unfolding & Nesting Instructions

1. To begin the unfolding process the unit must be in an upright position. See Fig. #10

2. Pull the Pin Assembly down and rotate the arms inward until the top tilts downward. In this position the tables are ready for nesting. See Fig. #11



BASE WARRANTY PARTS IDENTIFICATION NOT INCLUDED IN ASSEMBLY

<u>REF#</u>	<u>QTY.</u>	<u>DESCRIPTION</u>	<u>PART NO.</u>
6	2	Locating Pin Assy.	8200230M *
7	2	Top Tube Cap	2073054L *
8	2	Bottom Tube Cap	8200962 *
9	2	Bottom Tube Rear Cap	8200963 *
10	1	Central Screw	7908080286 *
11	2	Side Screw	7908080285 *
12	4	Thread Apaptor	8200965 *

** Individual Items, Order by part number.*

