

I585

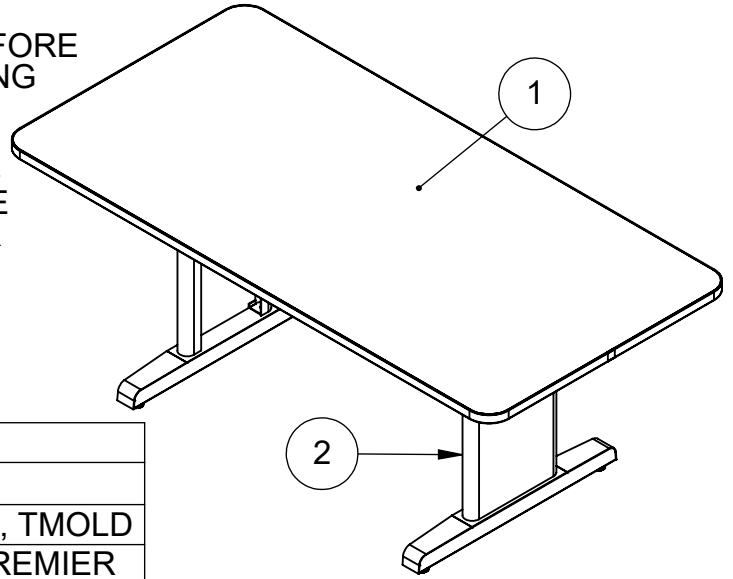
ASSEMBLY INSTRUCTION



AI, CSII CONFERENCE TABLES

NOTES:

- PLEASE COUNT & INSPECT ALL PIECES BEFORE DISPOSING OF ANY CARTONING OR PACKING MATERIALS. ALL UNITS CONSIST OF 2-3 CARTONS CONTAINING THE FOLLOWING.
- WHEN ORDERING COMPONENTS, SPECIFIC COLOR AND/OR SIZE INFORMATION MAY BE REQUIRED. CONTACT MAYLINE CUSTOMER SUPPORT AT 1-800-822-8037



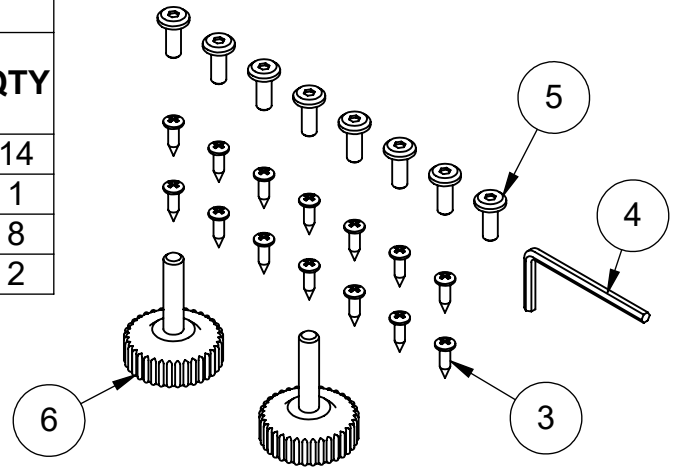
TOP CARTON

ITEM	PART NO.	QTY	DESCRIPTION
1	CALL~~**	1	TOP, RECT, CONF, HPL, TMOLD
2	CALL~~**	2,3	LEG, TABLE, CONF, PREMIER

\*\*DENOTES COLOR CODE  
 ~~DENOTES SIZE

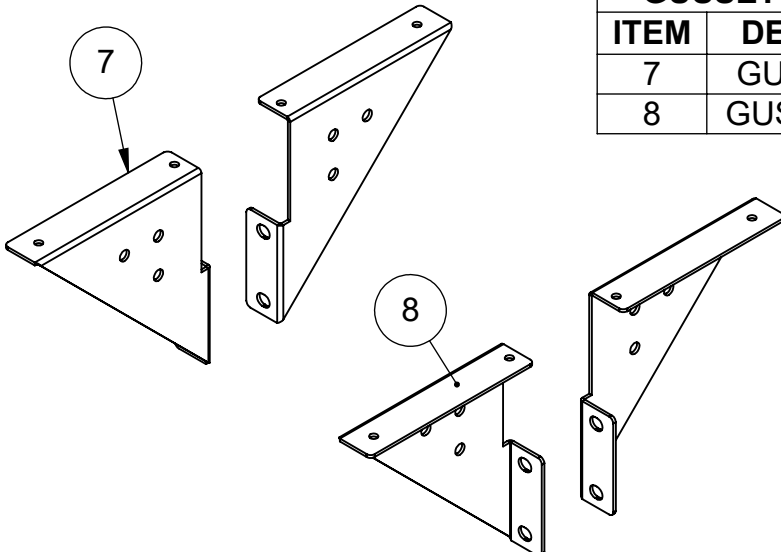
HARDWARE BAG, PART# ACT181

ITEM	DESCRIPTION	QTY
3	SCREW, #8 X 0.63, PPHPBS, , BLACK OXIDE	14
4	HEX KEY, M4	1
5	SCREW, M6 x 16mm, PHCS BLACK	8
6	GLIDE, M8 x 35mm	2



GUSSET KIT, PART# ACT184

ITEM	DESCRIPTION	QTY
7	GUSSET, LEFT	2
8	GUSSET, RIGHT	2

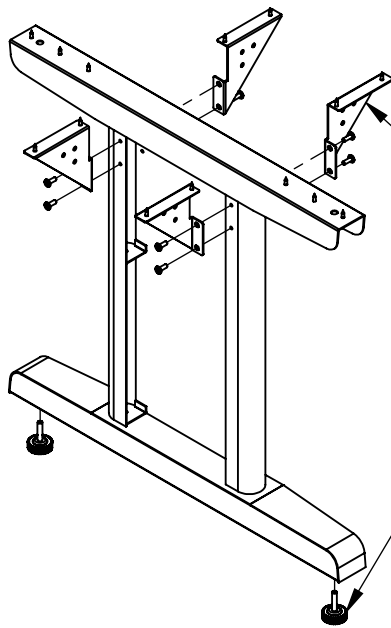


NOTE:  
 1 PER LEG ASSEMBLY CARTON

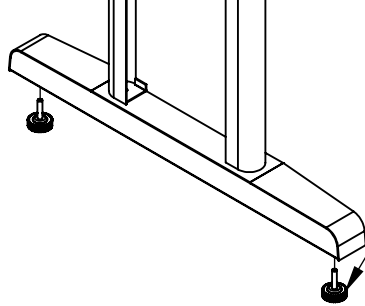


619 N. Commerce, P.O. Box 728 Sheboygan, WI 53082-0728  
 www.mayline.com 800-822-7388 920-457-7388

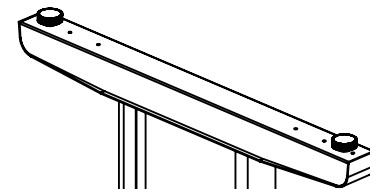
TOOLS REQUIRED FOR ASSEMBLY  
 1. PHILLIPS SCREW DRIVER  
 NOTE: A MAGNETIC POWER DRIVER  
 MAY BE USED TO ASSIST.



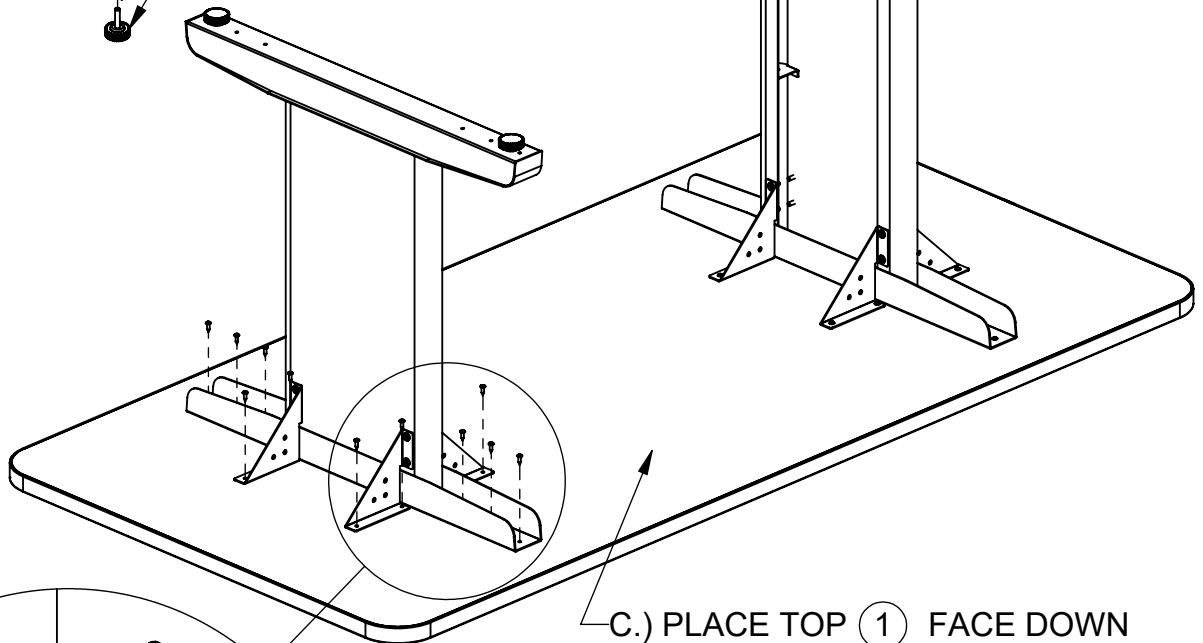
A.) ATTACH FOUR GUSSETS (7) (8) TO LEG ASSEMBLY  
 USING EIGHT SCREWS (5) & HEX KEY. (4) FLANGES  
 FACING OUTSIDE.



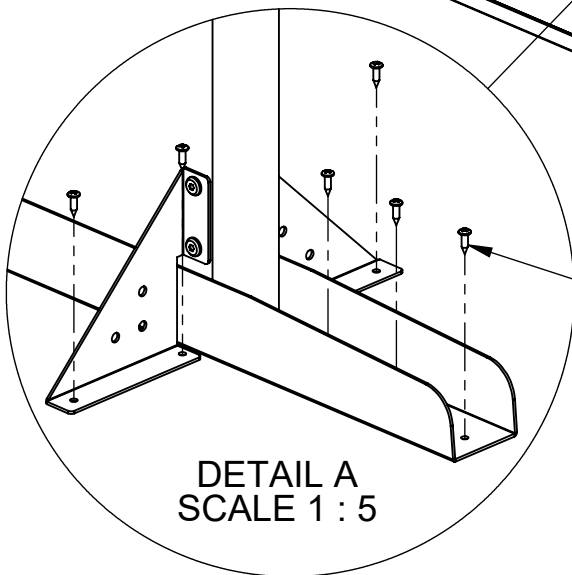
B.) SCREW TWO GLIDES (6) INTO LEG BOTTOM



C.) PLACE TOP (1) FACE DOWN  
 ON A CLEAN FLAT SURFACE.  
 ATTACH LEG ASSEMBLY (2) TO  
 TOP BY ALIGNING HOLES IN THE  
 LEG ASSEMBLY WITH TOP



D.) SCREW BOTH LEG ASSEMBLIES TO TOP. (3)  
 PILOT HOLES ARE FOR LEG CHANNEL ONLY.  
 GUSSETS DO NOT HAVE PILOT HOLES.



DETAIL A  
 SCALE 1 : 5

