

# ASSEMBLY INSTRUCTIONS

## COHERE CONFERENCE TABLE A4 & A5

**NOTE:**

**PLEASE COUNT AND INSPECT ALL PIECES BEFORE DISPOSING OF ANY CARTON OR PACKING MATERIALS.**

When ordering components, specific color and/or size information may be required.  
Contact a Mayline Customer Service Representative. 1-800-822-8037

**COMPONENTS FOR A4 & A5 CONFIGURATION**

REF#	QTY A4	QTY A5	DESCRIPTION	PART NO.
1	2	3	Top	CALL ~**
2	2	2	Y-Bridge Leg Assembly	CALL ~**
3	1	2	Center Bridge Leg Assembly	CALL ~**
4A	4	0	43" Bridge	CALL ~**
4B	4	4	55" Bridge	CALL ~**
4C	0	2	67" Bridge	CALL ~**
5	2	4	Channel, Top Joining	B4283

**HARDWARE BAG (Part No. A8814) Per/table seam**

REF#	QTY.	DESCRIPTION	PART NO.
E1	25	Screw #10 x 3/4"	X11*
E2	1	Tite-J, Tightening Rod	X346*
E3	3	Tite-J, Locking Sleeve	X347*
E4	3	Tite-J, Draw Bolt	X348*
E5	3	Tite-J, Tightening Assembly	X349*

*\*for individual item, order that part number*

**HARDWARE BAG (Part No. DS242) per Y-Bridge/Center Bridge Leg Assembly**

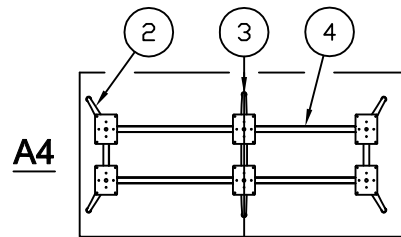
REF#	QTY.	DESCRIPTION
E6	16	Screw, #12 x 1" PHS

**HARDWARE BAG (Part No. DS163) per Bridge**

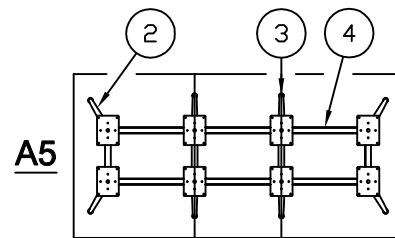
REF#	QTY.	DESCRIPTION
E7	2	Backer Plate
E8	2	Screw, 3/8-16 x 1.00

**Replacement Part not included in assembly**

REF#	QTY	DESCRIPTION	PART NO.
R1	1	Glide	DS131



54"x120"-144"  
2 Piece Top



54"x216"  
3 Piece Top

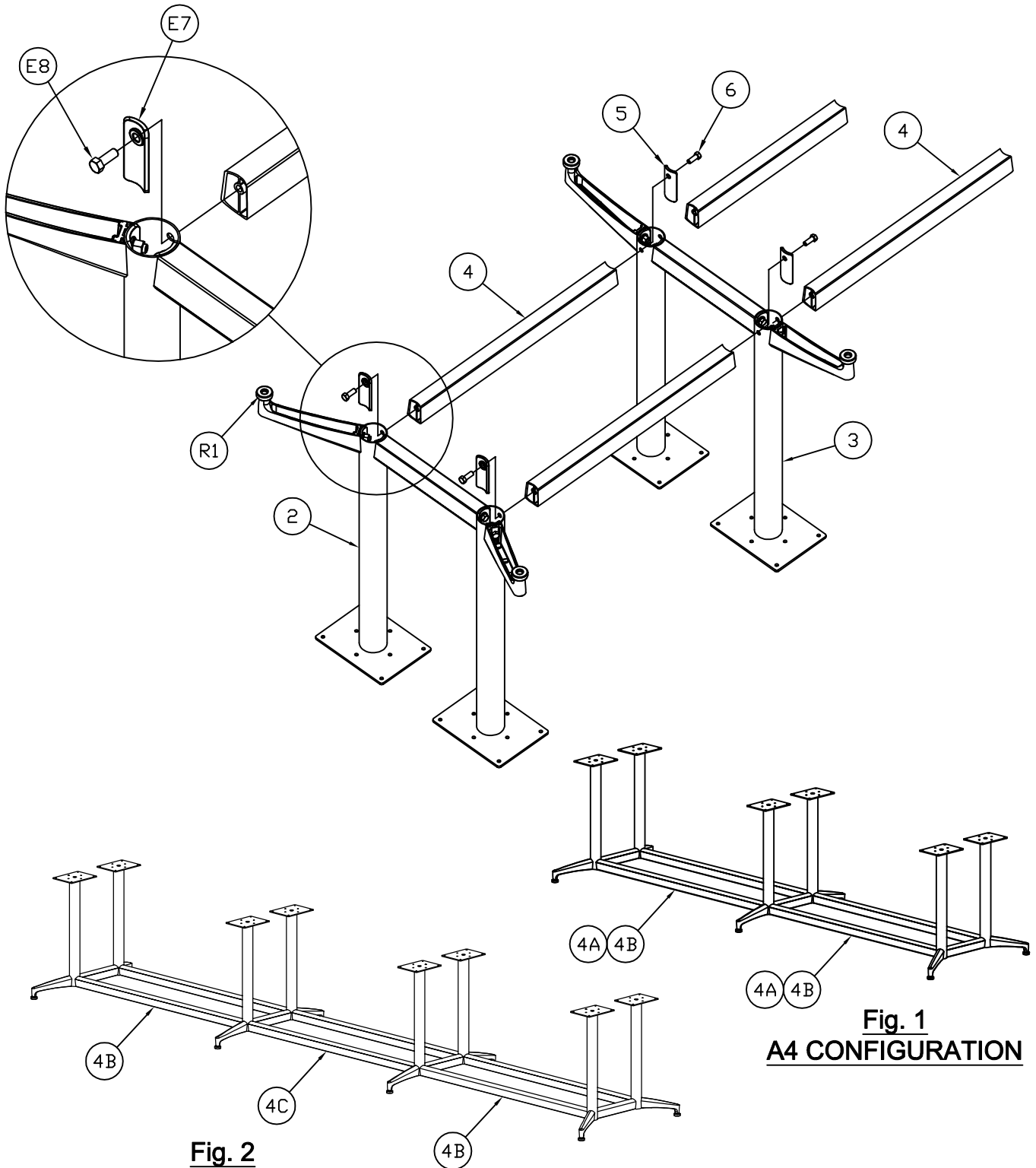
**Recommended tools for Assembly: 9/16 Open-end Wrench, #3 Phillips bit**

**A4 Configuration: See Fig. 1 for Bridge Layout.**

**1. Attach Y/Bridge Leg Assembly (2) to Bridge (4) using Backer Plate (E7) and Screw (E8). Repeat for each Bridge.**

**A5 Configuration: See Fig. 2 for Bridge Layout.**

**2. Start with Step 1 above, then attach Center-Bridge Leg (3) to Bridge (4) using Backer Plate (E7) and Screw (E8). Repeat for each Bridge.**



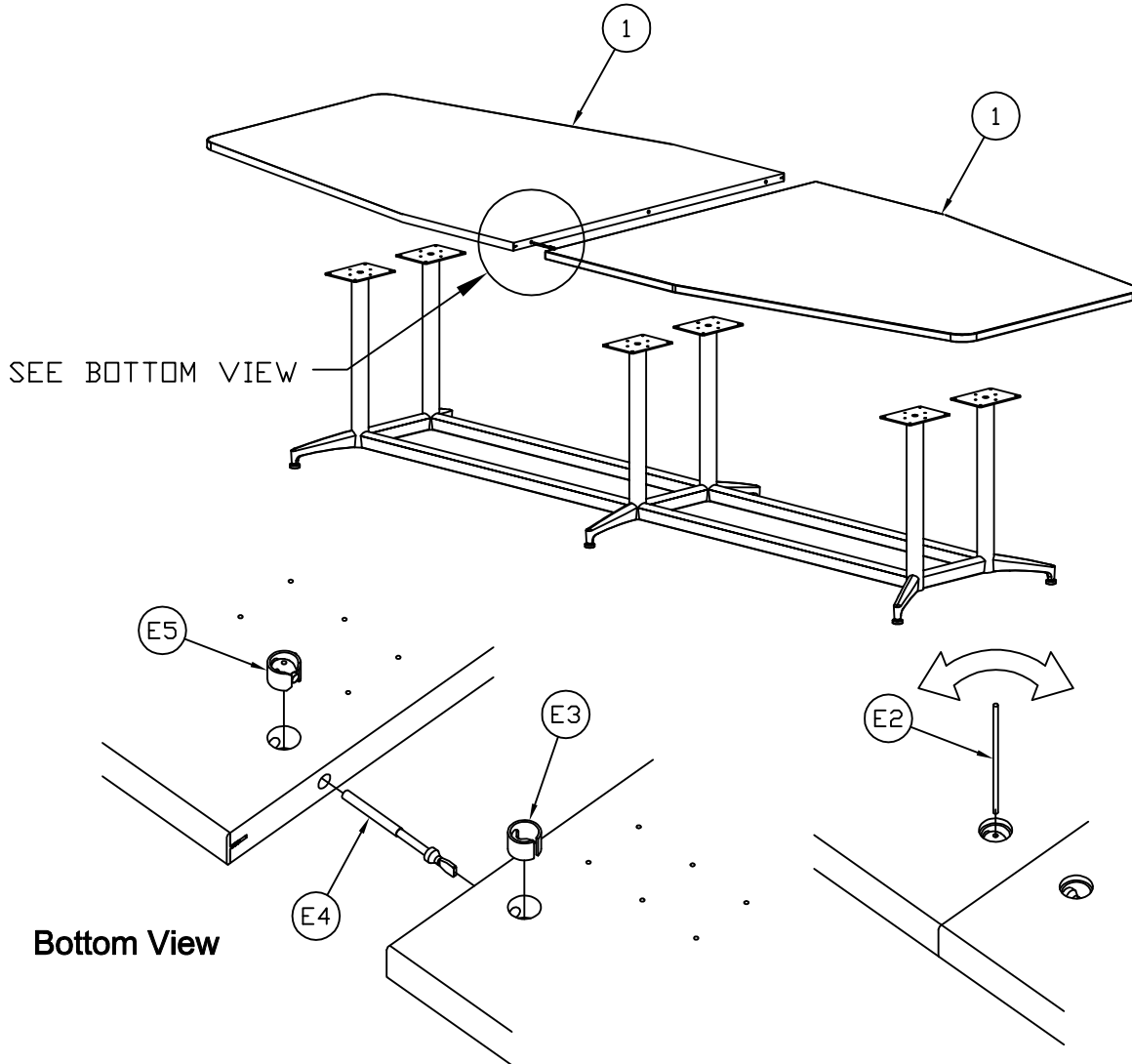
**Fig. 2**  
**A5 CONFIGURATION**

**Fig. 1**  
**A4 CONFIGURATION**

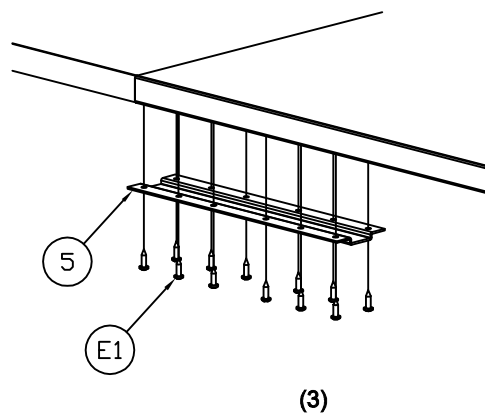
3. Place Base Assembly right side up and set Tops on Base.

See Bottom View Below.

4. Place Draw Bolt (E4) into hole and insert Locking Sleeve (E3) over Draw Bolt. Insert Tightening Assembly (E4) into hole and slide tops together. Rotate the Tightening Assembly to draw both tops tight using Tightening Rod (E2). Repeat for all holes.

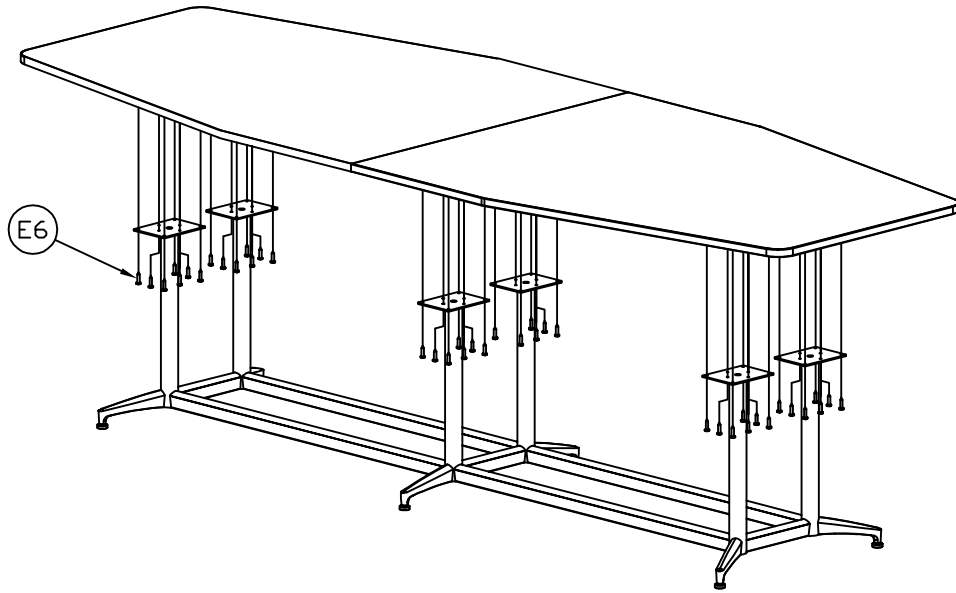


5. Attach Channels (7) to Tops using 12 Screws (E1). Repeat 2X per seam.



6. Attach Tops using 8 Screws (E6) per Mounting Plate.

**DO NOT TIGHTEN SCREWS UNTIL ALL SCREWS HAVE BEEN STARTED.**



**\*\*DO NOT\*\***  
ASSEMBLE UP-SIDE DOWN AND  
TRY TO FLIP TABLE .

